

## Advanced Solar Power for Transit Buses

### POWER BENEFITS:

- Extends bus operating range
- Powers all “non-motive” systems
- Extends auxiliary battery life
- Reduces recharge time of primary battery

### For Electric and Hybrid Transit Buses

eNow technology extends bus operating range by off loading “non-motive” power demand, such as electronics, from the primary battery to an auxiliary battery.

eNow’s patented solar system maintains an optimal state-of-charge on the auxiliary battery, and extends battery life by 2 to 3 years.

Advanced ETFE-encapsulated solar panels and “smart” MPPT charge controllers combine to keep the auxiliary battery charged all day, even on cloudy days. eNow’s reliability has been proven on thousands of heavy-duty trucks, trailers and buses.

*eNow powers all non-motive systems so the engine battery is 100% dedicated to maximizing vehicle range.*



## APPLICATION OVERVIEW



**Public transit companies today** want buses that run cleaner, quieter and cost less to operate. Electric and hybrid buses – enhanced by solar technology – is a strong solution.

In short, eNow solar systems maintain a healthy state-of-charge on auxiliary batteries which can power electronics, lighting, audio, and even cooling. This solution ensures the engine battery is dedicated to delivering maximum bus operating range.

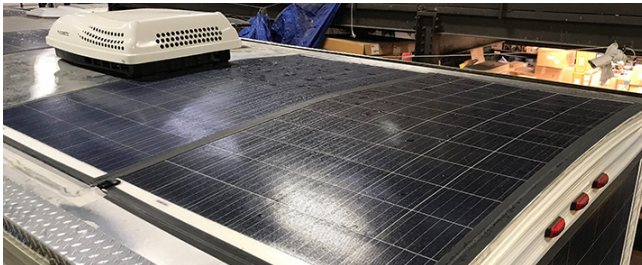
eNow systems optimize battery-charging and generate multiple kilowatts of clean energy daily – even on cloudy days.

### Support Services

eNow also has the experience and ability to provide custom design, engineering and installation support to meet your needs.

## PATENTED, HIGH-PERFORMANCE TECHNOLOGY

- Thin, aerodynamic, lightweight, flexible solar panels
- Silent, emissions-free energy source
- Delivers optimal power every day, even in low-light
- Fully charges all types of batteries including Li-ion
- Rugged design, salt and corrosion resistant
- Proven reliability due to extensive testing
- 5-year warranty



Powerful eNow solar systems can generate up to 8kW of electricity by day, while its high-performance Lithium Ion battery bank stores energy for future power needs and extended equipment runtime.

## eNOW SOLAR SYSTEM SPECS

Panel Thickness:	0.125" [3.2mm]
Description:	100 to 400 Watts per panel
Type of Cells:	Mono- and multi-crystalline cells
Installation:	Adhesive-back permanent mounting
Weight:	8 ounces per square foot [.227 kg per square meter]
Nominal Battery Charge:	12 VDC, 24 VDC, 48 VDC
Max. PV Input Power:	Up to 8,000 Watts
Battery Options:	Lithium-Ion, Nickel Zinc, Lead Acid (flooded and AGM)
Charger Control Algorithm:	MPPT (Maximum Power Point Tracking)

## eNOW SYSTEMS INCLUDE

eNow solar panels, eNow MPPT charge controllers, heavy-duty wiring harnesses, emergency disconnect switches, fuses, installation guide, 5-year warranty.

Click this [link to download complete specs](#) on all eNow systems.

# POWERING POSSIBILITIES

**enow**<sup>TM</sup>

133 Hallene Road, Warwick, RI 02886 P: 401 732 7080 E: [info@enowenergy.com](mailto:info@enowenergy.com)